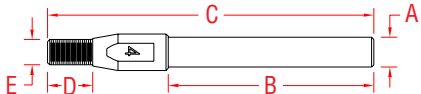


# HANDISWAGE™ SHORT STUD

UNF - 316L STAINLESS STEEL



ITEM

A

B

C

D

E

WT

(cable)

(thread)

(lb)

**S0731-HM0703**

1/8"

1.51"

2.56"

0.44"

0.25"

0.02

**NOTE:**

***DESIGNED FOR HAND SWAGE USE ONLY. The HandiSwage™ Short Stud is ideal for cable railing applications where minimal obstruction is desired. Threads are "UNF". Crimp HandiSwage™ Studs onto cable using the Hand Swager (E0113-H600).***

**HANDISWAGE™**