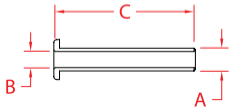
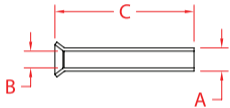


HANDISWAGE™ CABLE SLEEVES

316L STAINLESS STEEL



ITEM

A

B

C

QTY.

WT

(lb)

10 PACK

C0915-0338

0.22"

0.15"

1.50"

10

0.08

C0915-0338-F

0.22"

0.15"

1.50"

10

0.08

NOTE: The HandiSwage™ Cable Sleeve is designed to protect your wood posts from chafing and incidental damage from cable rubbing around the outside of your mid post cable holes. It can also be used to accommodate angles up to 90 degrees and stairways coming off a straight run.

Beveled cable sleeve not recommended for installs using vinyl or composite sleeves over 4 x 4 posts. Flat cable sleeve renders superior fit for sleeved products.

HANDISWAGE™