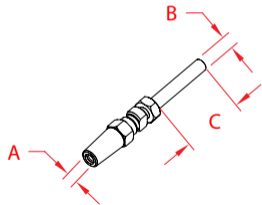


RAILEASY™ STUD

316L STAINLESS STEEL



ITEM

A

B

C

WT

(cable)

(lb)

S0980-0003

5/32"

1/4"-28

1.75"

0.07

NOTE:

Patented tensioner stud is used on one side of a cable railing application. A RailEasy™ Tensioner is needed at the other side for tensioning capabilities. Stud is UNF threaded. Can be used with stainless steel or plastic cover nut sets (see pg. 23).